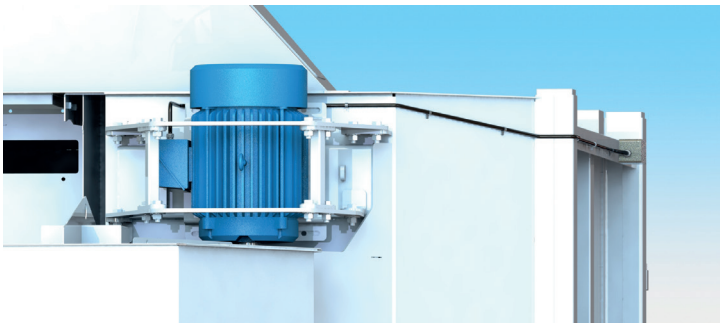


ROTEX[®] | GROUP

ROTEX[®] BM&M

MOTOR CABLE ROUTING KIT



➤ Power cable routing kit extends the life of your flexible power cord and provides different layout options. It includes armored cable, cable glands, packing insulation, and all hardware for an easy installation.

ROTEX GROUP PART NUMBER: 316927

LOCKING FLATS



➤ Drop-on flats hold the bolt head, reducing installation time and requiring only one wrench during screen replacement.

ROTEX GROUP PART NUMBER: 372644/372643

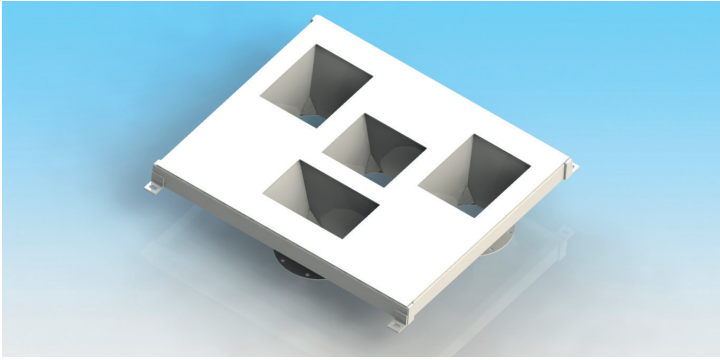
DOOR SEAL KIT



➤ This kit makes door seal replacement easier and faster with seals precut to the proper length and contour.

ROTEX GROUP PART NUMBER: CONTACT ROTEX GROUP

ABRASION RESISTANT LININGS -DISCHARGE BOX



➤ AR400 or AR200 abrasion resistant steel liners extend the life of the discharge boxes.

ROTEX GROUP PART NUMBER: CONTACT ROTEX GROUP

SEGMENTED PANELS



➤ Reduce time and effort for screen maintenance. Screen panels do not require tensioning and can be replaced without the need to remove screen frames from the machine. These also provide the option for different mesh sizes in a single deck..

ROTEX GROUP PART NUMBER: CONTACT ROTEX GROUP

TOOL KIT



➤ Collection of tools to help maintain, adjust, and work on your machine. All tools are also available to be sold separately. Please contact Rotex Group for details.

ROTEX GROUP PART NUMBER: 396773

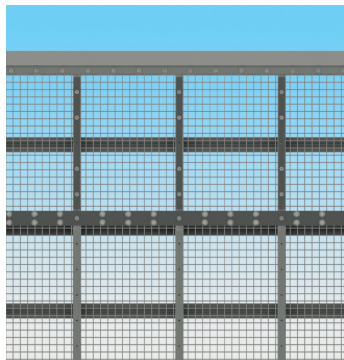
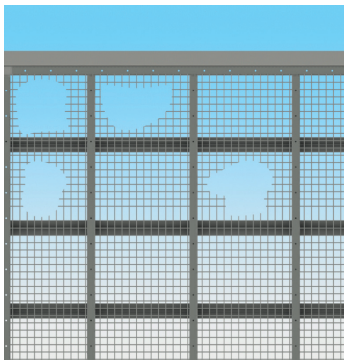
BELT TENSION METER



➤ The sonic tension meter allows you to measure and check the tension of your drive belt easily and accurately.

ROTEX GROUP PART NUMBER: 465411

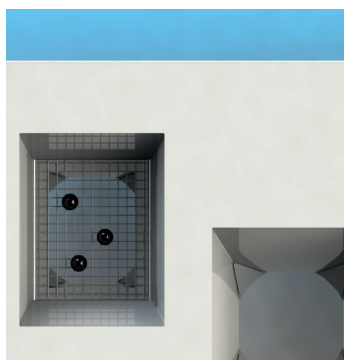
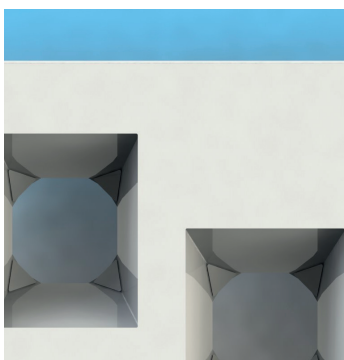
BALL SUPPORT SCREEN REPAIR KIT



Extend the life of a worn screen frame by replacing only the tattered section of the ball support.

ROTEX GROUP PART NUMBER: 396731

BALL CATCHERS



Easy-to-install assemblies capture loose mesh cleaning balls in the discharge boxes below your Minerals Separator.

ROTEX GROUP PART NUMBER: CONTACT ROTEX GROUP

LOCKING TRIGGER REPLACEMENT



The locking trigger secures the door clamp during operation. Easy to follow instructions are provided for installing replacement triggers. New clamp assemblies are also available.

ROTEX GROUP PART NUMBER: 392102

MOTOR JUNCTION BOX INSULATION



A pack of electrical insulation made of Ceramic Fiber for quick, easy, and clean installation.

ROTEX GROUP PART NUMBER: 396778

SAFETY CABLES



- Designed to protect personnel and property if a U-joint fails.

ROTEX GROUP PART NUMBER: 396728

MOBILE VIBRATION MONITORING SYSTEM



- Allows you to measure structural vibrations for the dynamic analysis of support structures.

ROTEX GROUP PART NUMBER: 364864

BOLT-ON HOIST



- Hoist facilitates maintenance to lift drive weights, motors, and drive cartridges.

ROTEX GROUP PART NUMBER: 357102

ROTEX® | **GROUP**
ROTEX **BM&M**

To find your local Rotex Group representative visit our website

therotexgroup.com