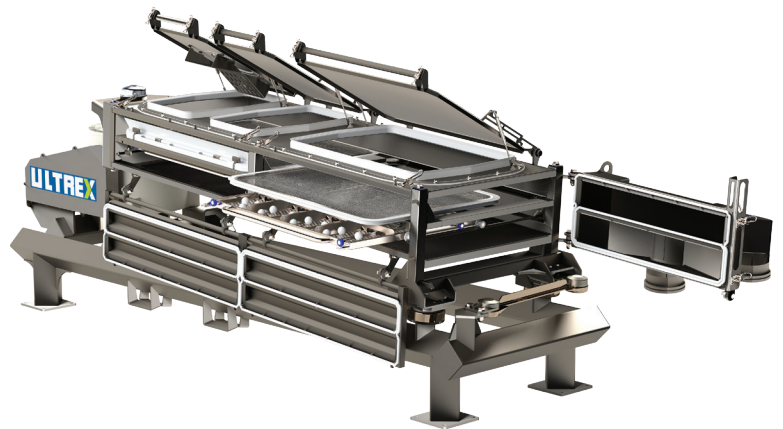


ROTEX® GROUP

ROTEX® BM&M

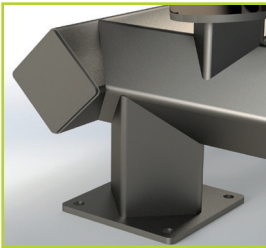
Sanitary, Ergonomic, and Efficient; the Ultimate Package.

The ULTREX industrial screener combines the ultimate sanitary and ergonomic design that enables extremely precise separations and one-person inspections / maintenance. Maintain your high standards with the efficient, sanitary, and ergonomic ULTREX.



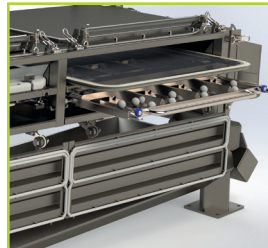
ULTREX Industrial Separator

FEATURES



Sanitary Design

Designed to be compliant with USDA, EHEDG, and FSMA requirements.



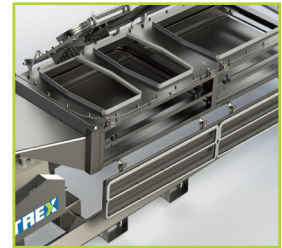
Toolless Ball Tray

Minimizes downtime for ball tray installation / removal and can be completed by a single operator.



Full Access Inside Screener

Top, side and discharge-end access for quick cleaning without the need for tools to disassemble.

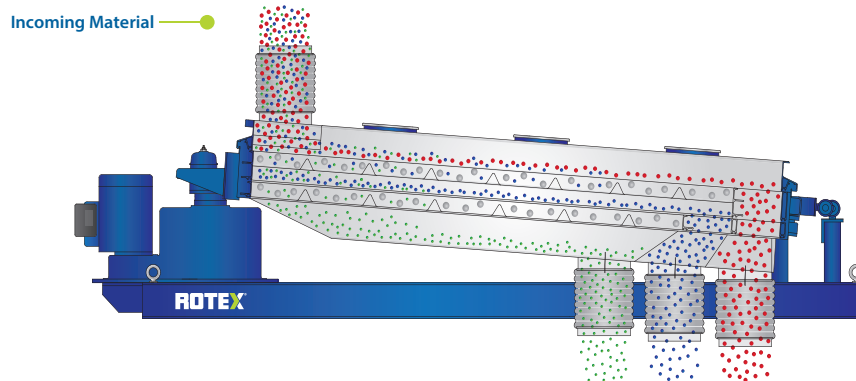


Washdown Capable

No internal flat surfaces or ledges provides self-draining capabilities when washdown is necessary.






How It Works

Rotex patented the innovative concept of Gyratory Reciprocating Motion and perfected it over years of lab testing, custom installations and field experience. No other solution combines low-angle screening with long-stroke and low-frequency characteristics in a single machine. This dynamic combination results in greater efficiencies, superior particle accuracies and higher yields.



Three motions. One machine.

BENEFITS

-  **Single Operator Maintenance**
The ULTREX full view top cover panels and side access doors allow one operator to inspect and/or change a screen panel in minutes.
-  **More Uptime, More Profit**
Easy inspection and maintenance results in reduced screening costs and increased productivity.
-  **Proven Screening Performance**
The ULTREX gyratory-reciprocating motion delivers on-spec product at higher yields than competitive vibratory motions.
-  **Longevity and Durability**
Rotex drives are designed for long-term, trouble-free service with minimal maintenance required.
-  **USDA, EHEDG and FSMA Compliant Design**
Product contact surfaces in the ULTREX are in compliance with recommended sanitary and hygienic standards.