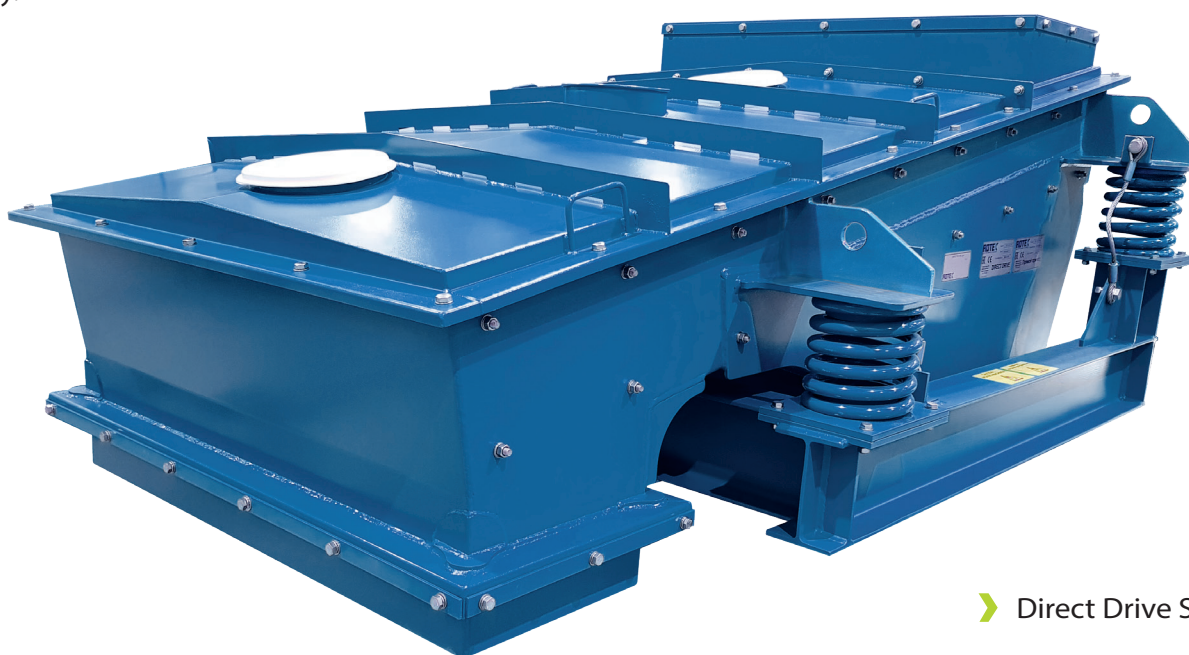


# ROTEX<sup>®</sup> | GROUP

ROTEX<sup>®</sup> BM&M

## Satisfy Light to Heavy Duty Applications in a Cost-Effective Way

Rotex Group has a full range of Direct Drive<sup>®</sup> Screeners for meeting all process requirements in the bulk handling industries. The Direct Drive Product Range is designed for screening, feeding and conveying your product in a cost effective way.



➤ Direct Drive Screener

### Direct Drive Screeners are designed and built to meet your requirements:

- The utilisation of contra-rotating electromechanical motors imparts both an upward & forward stroke to the screener. The angle of the motors determines the preference towards either lift or conveying.
- Various installation options include Rosta, Barrel or Suspension style mounts. Safety straps are fitted where relevant.

### FREE MATERIAL ANALYSIS

Over 100 years of proven correlation between lab test results and actual field performance:

- Recommendations from experienced Lab Technicians and Application Engineers to ensure accurate, efficient separations
- Comprehensive separation analysis
- Summary report provides data to support ROI decisions

## HOW IT WORKS

### › Drive mechanism

The utilisation of contra-rotating electromechanical motors imparts both an upward & forward stroke to the main feeder body. The angle of the motors determines the preference towards either lift or conveying. The stroke can be adjusted from zero to around 10mm in most cases.

### › Isolation mounts

Rosta mechanical, standard barrel type mounts can be used for all foot mounted requirements. For suspension design isolation rods & rubber mounts are provided along with safety straps.

### › Screens

Screens are usually of a hook strip design with manual tensioning or of a taper slot finger design in the form of removable modular baskets. Typical media designs include – square aperture & slotted aperture mesh. Rod decks, taper finger decks, piano wire, perforated plate.

## SPECIFICATION

### › Construction

All machines are available in either mild or stainless steel construction. Wear liners are available in most materials if required, such as Mild Steel, Stainless Steel, UHMWP, Abro, Hardox, Alumina, Ceramic.

### › Sizes

Sizes range from 0.2m – 2m wide & from 0.5m to over 6m long.

### › Drives

The drives are from an electromechanical range with adjustable weights for accurate tuning. Voltages & IP requirements can be offered to suit most applications.

### › Enclosures

Covers available with either bolted or quick release mechanisms. Fully enclosed systems use Trelleborg type seals & enclosed shrouds.

### › Hopper interface

For hopper bottom installations we can provide either an open type or fully enclosed type interface with or without a rod gate isolation system.



## FEATURES

- › Fully isolated design
- › Suspended or floor mounted
- › Continuous one piece tray sections or removable discharge section
- › Twin vibrator drive
- › 1 or 2 deck configuration

## APPLICATIONS

- › Scalping and/or fine removal
- › Plastic pellet
- › Feed pellet
- › Sugar
- › Food additives
- › Minerals

## BENEFITS

- › Compact and competitive design
- › Easy to operate and maintain
- › Simple and robust drive mechanism