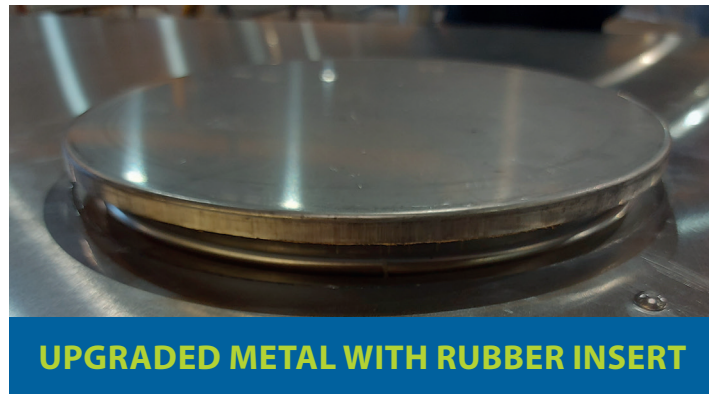


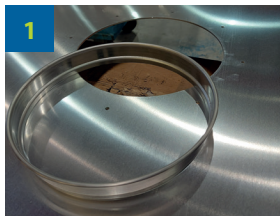
## UPGRADE YOUR TOP COVER INSPECTION CAPS



### Introducing the New and Improved Rotex Top Cover Inspection Caps

We have redesigned our top cover inspection caps to provide an upgraded solution that makes them easier to fit than the original rubber caps and impossible for an operator to install them incorrectly. The new metal caps cannot be pushed or sucked into the machine resulting in damage and downtime.

### Replacing Your Inspection Caps in 5 Easy Steps



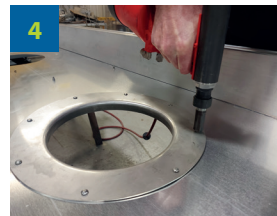
Remove existing ring from the top cover.



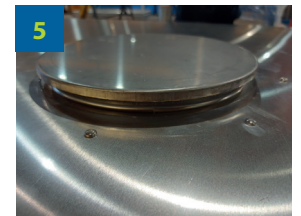
Insert the formed inspection ring into the hole and drill 8 x 5.5mm (7/32") holes.



Remove the ring and apply a bead of silicone RTV around the hole in the cover to seal the new inspection ring.



Fix the formed ring with 8 rivets.



Install the new metal inspection cap and the upgrade is complete.

Order your new inspection caps today by calling (513) 542-PART (7278) or emailing [parts@rotex.com](mailto:parts@rotex.com)

